



MORVELLE[®]



POTTED RED
Huescape

MORVELLE

Table of contents

Introduction	2
British Design & Manufacturing	5
Huescape Colour Palette	10
Select Pergola	
Features	24
Sizes	26
Technical Information	27
Accessories	31
Warranties	33

MORVELLE²

Transform Your Outdoors

At Morvelle, we don't just design and manufacture exceptional outdoor structures – we create experiences. Our premium *Select* pergolas are engineered with care and precision, offering unrivalled quality and durability for your home.

From sleek, modern canopies to versatile bioclimatic pergolas, we bring you bespoke solutions to elevate your outdoor space. With a wide range of colours to choose from, our pergolas are as stylish as they are functional, allowing you to create the perfect environment for relaxation, entertaining, and everything in between.

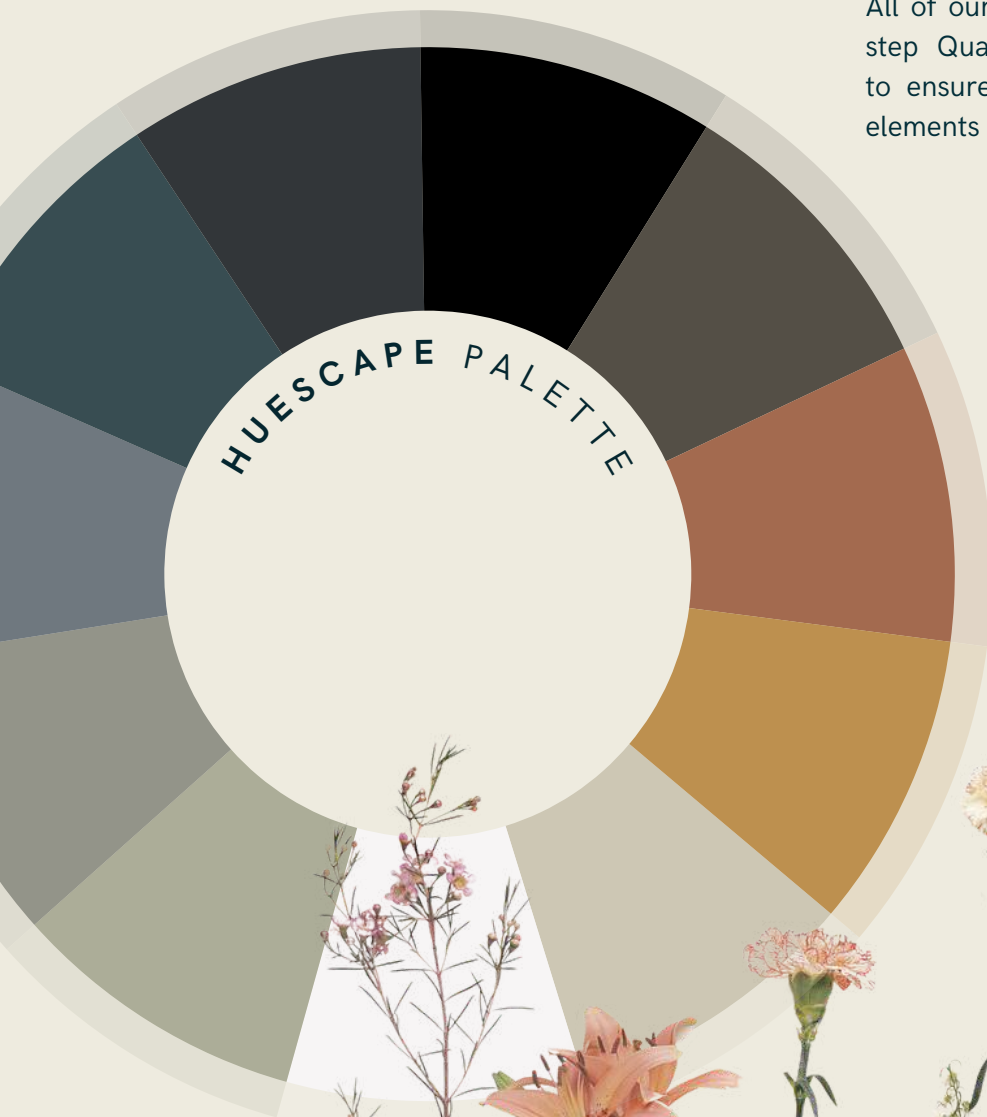
Proudly designed and manufactured in the UK, Morvelle's outdoor products are built to withstand the elements, ensuring your retreat remains beautiful and durable for years to come.

**Outdoor living is more than just a space – it's an experience.
Let us help you create the perfect setting.**

Let there be COLOUR

Introducing our new colour palette, carefully curated to ensure each of the shades harmoniously blends with the natural vibrancy of garden blooms and residential styles. Soft, earthy neutrals and richly grounding tones, this palette has been designed to enhance the elegance of your garden, creating a serene and cohesive atmosphere.

All of our aluminium is finished in a multi-step Qualicoat-certified powdercoat finish to ensure your pergola can withstand the elements and last a lifetime.





HARVEST OCHRE
Huescape



Proudly British, Uncompromising Quality.

As the only truly British designer and manufacturer in our industry, Morvelle stands at the forefront of engineering and innovation. We are dedicated to excellence in every detail – from premium materials to cutting-edge design.

Our unwavering commitment to quality means that we don't just meet industry standards; we set them. Each of our products is built to deliver exceptional durability and superior performance, ensuring lasting value for our customers and transforming outdoor spaces for years to come.







MOSSY OLIVE
Huescape

Colourful, British-designed pergolas. Built to last, made to stand out.



FIELD GREEN
Huescape

Select Your Style



Huescape

A timeless colour palette, drawn from the British landscape

Our Huescape colour palette is inspired by the timeless elegance and charm of England's landscapes, traditions, and architecture. The selection brings together rich, muted tones that reflect the nation's diverse heritage – from the deep greens of the countryside, the soft creams of classic stone cottages, to the subtle blues and browns seen in historic gardens and iconic London. Designed with nature in mind, each shade harmoniously blends with the vibrant colours of garden plants and flowers, ensuring your pergola complements the beauty of your outdoor space. Whether surrounded by the lush greenery of summer or the delicate hues of blossoming flowers, this refined and understated palette creates a seamless connection between your pergola and the natural world. Perfect for both contemporary and traditional outdoor settings, embrace the essence of British style and engineering with every detail, bringing a touch of sophistication to your garden.

CONTACT US TO REQUEST SAMPLE SWATCHES

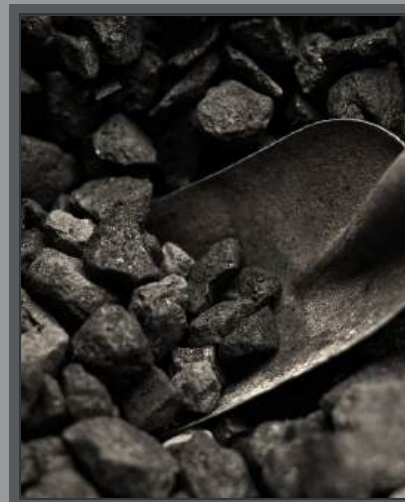
Midnight Black

Inspired by the sleek, timeless black cabs that traverse the streets of London, a deep black that exudes sophistication and urban charm. Whether you're looking to create a striking focal point or add a touch of refined luxury to your space, black offers an strong effortless foundation within any garden.



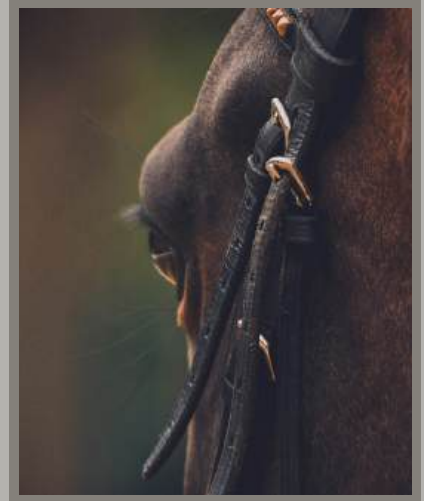
Anthracite Grey

Inspired by the deep, refined tones of anthracite coal, a hue that blends rich charcoal with subtle metallic undertones. This sophisticated grey exudes a modern elegance, making it the perfect choice for those seeking a contemporary yet timeless colour with a touch of industrial chic.



Bridle Brown

Inspired by the rich, deep brown of a horse's bridle and coat, a refined, earthy hue that embodies strength, elegance, and timeless tradition. This dark brown, with subtle hints of warm red, mirrors the polished leather of a well-worn bridle, perfect for creating a space that feels both grounded and refined.



Potted Red

Inspired by the timeless charm of classic terracotta, this deep, earthy red with subtle orange undertones evokes the rustic beauty of well-worn garden pots, filled with flourishing plants and the scent of fresh soil. It's a colour that brings warmth, depth, and a touch of Mediterranean elegance into any space.



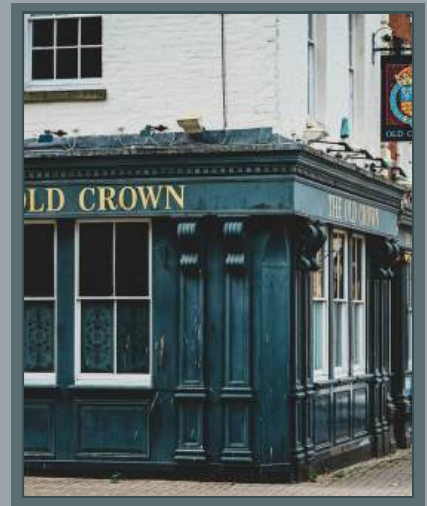
Harvest Ochre

Inspired by the golden glow of wheat fields ready for harvest, a warm, rich yellow with a golden tint. This hue captures the essence of the fields as they shimmer under the sun, full of promise and vitality. It's the perfect shade to infuse your garden with a sense of energy, comfort, and charm.



Local Navy

Inspired by the deep, comforting navy of a beloved local pub, a rich, dark blue that exudes tradition and a sense of relaxation. Creating an inviting atmosphere of a cozy environment that feels both intimate and elegant – perfect for those who appreciate classic style with a hint of British charm.



Rainfall Blue

Inspired by the soft, muted blue-greys of an overcast English day. Cool, misty tones that bring a subtle depth and tranquillity, creating an atmosphere of stillness and and introspection. Perfect for those seeking a soothing, atmospheric backdrop.



Mossy Olive

Inspired by the lush gardens and the forests. A rich and earthy hue that speaks of ancient woodlands, ivy-covered walls, and the tranquillity of long walks in nature. Whether paired with neutral tones or rich textures, this mossy green invites you to unwind and reconnect with the natural world. Ideal for spaces where you seek balance, peace, and a connection to the earth.



Field Green

Inspired by the lush, rolling green fields of the British countryside, a fresh green hue that evokes the beauty of endless meadows under a spring sky. This colour captures the vitality and tranquility of nature's embrace, offering a serene yet vibrant backdrop that breathes life into any space.



Cotswold Cream

Inspired by the warm, honeyed hues of the iconic Cotswold stone, a soft, inviting cream with subtle golden undertones. This hue captures the charm and character under the gentle English sun. A touch of rustic sophistication for any space, evoking the peaceful beauty and timeless appeal of the countryside.



Fresh White

Inspired by the striking, pure white cliffs of Dover, with a bright, clean white with an almost radiant quality. This colour mirrors the cliffs' majestic presence, standing tall and timeless against the backdrop of the sea and sky. It's the perfect shade for creating a crisp, airy atmosphere.



MORVELLE

Select Your Design

Design your perfect outdoor space with ease. Our *Select* pergola offers a variety of configurations to suit any garden whether you're looking for a cozy retreat or a spacious entertaining area. No matter the size of your space, we've got you covered.

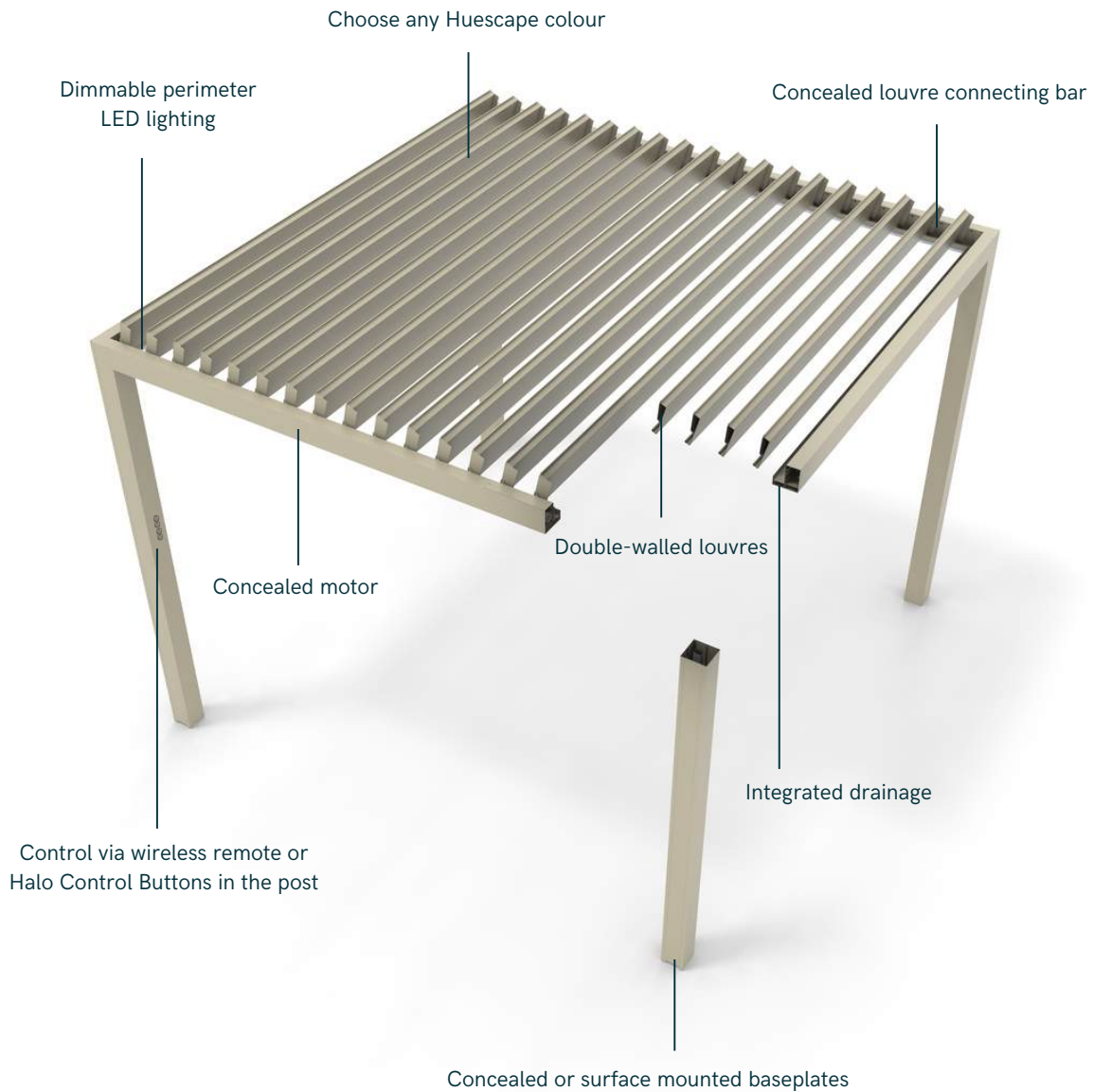


POTTED RED
Huescape

Features you'll love

The little things, perfected

Every detail of the Select Pergola has been carefully considered – from its clean architectural lines and equal proportions, to its versatile accessory options. With unmatched customisation, refined functionality, and class-leading durability, Select redefines what a standard-sized pergola can offer.



Feature highlight

Halo Control Buttons

Intuitive backlit buttons that provide simple control of louvres, lighting, and heaters





LOCAL NAVY
Huescape

CHOOSE YOUR SIZE

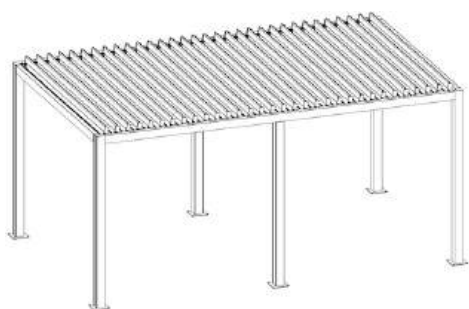
3 metres wide



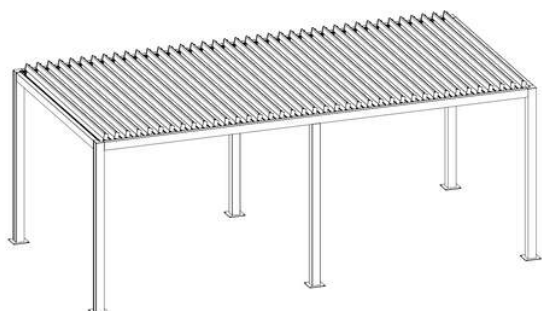
3000mm x 3000mm



3000mm x 4050mm

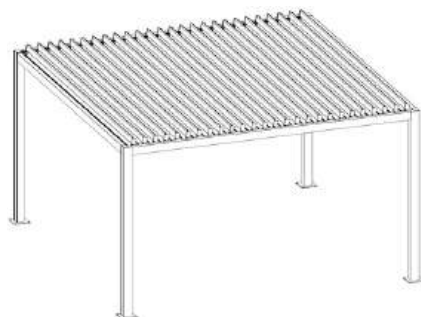


3000mm x 4950mm

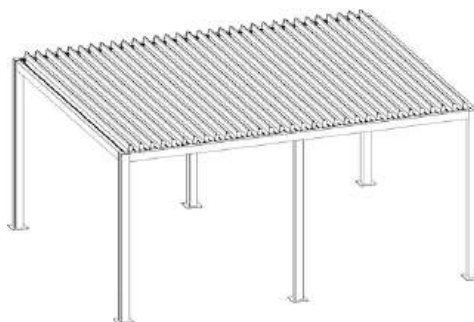


3000mm x 6000mm

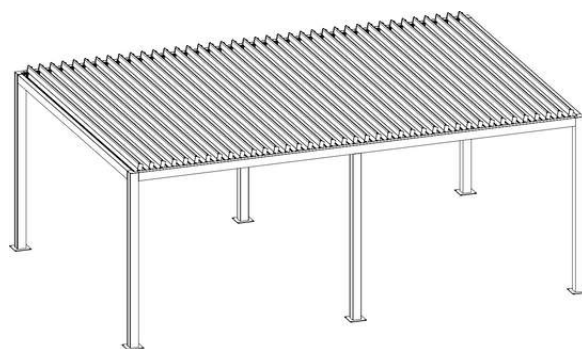
4 metres wide



4050mm x 4050mm



4050mm x 4950mm



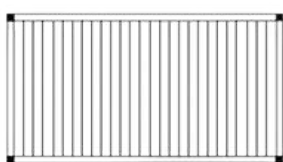
4050mm x 6000mm

TECHNICAL INFORMATION

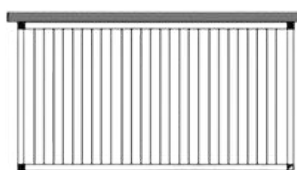
SELECT BIOCLIMATIC PERGOLA

Sizes	3m x 3m / 4m / 5m* / 6m* 4m x 4m / 5m* / 6m* *Length over 4m requires 6 posts. Height of all sizes is 2.5m.
Material	Highest grade 6063-T6 Aluminium, stainless steel fixings
Certifications & accreditations	Designed & Made in Britain, tested to Wind Class 6, Snow Zone 3. Load tested to BS EN 1991-1-3:2003. Certified for structural safety (BS EN 1090) and environmentally responsible practices (ISO 14001).
Warranty	5 years structural warranty from install date 2 years on electrical components
Electrical	24V Motor controlled via Halo Control Buttons or wireless remote IP-rated continuous perimeter warm white LED lighting
Colour & finish	Smooth matte powdercoated finish in any Huescape® colour, Qualicoat certified for long-lasting durability.
Optional sensors	Rain & Snow - closes louvres when conditions worsen Wind - opens louvres when windy to reduce uplift
Compatible accessories	Fixed Panels, Louvred Panels, Sliding Glass Doors, Zip Blinds, Heaters

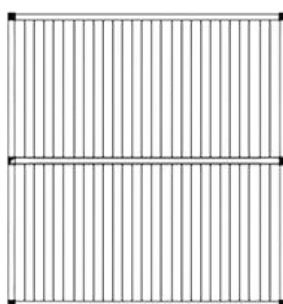
CONFIGURATIONS



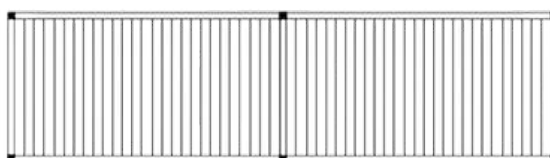
Stand alone



Fixed to wall



End to end



Side by side



FRESH WHITE
Huescape

Select Your Accessories



POTTED RED
Huescape

ZIP SCREEN BLINDS

- 3% screen fabric for glare protection and privacy
- Manually operated by push/pulling the hembar
- Hardware in any Huescape colour, single fabric colour
- 2-year warranty



ALUMINIUM LOUVRED PANELS

- Fixed louvred panels providing privacy and shade
- Available in any Huescape colour
- Multiple configurations with part-coverage
- 10-year warranty

ALUMINIUM SOLID PANELS

- Solid panels for total privacy and weather protection
- Available in any Huescape colour
- 10-year warranty



GLAZED PANELS

- Fixed 8mm toughened glass, maximises natural light
- Complete wind and rain protection
- Hardware in any Huescape colour
- 10-year warranty

SLIDING GLASS DOORS

- Sliding, interlocking 8mm toughened glass panels
- Panels stack without overlap for a clean, flush finish
- Flexible protection from wind and rain
- Maximise natural light, whatever the weather
- Hardware in any Huescape finish
- 10-year warranty



INFRARED HEATERS

- 1600-1900W IP65
- Finished in black with silver grille
- CE & UKCA Certified
- 2-year warranty



MORVELLE[®]
MADE IN SWITZERLAND

COTSWOLD CREAM
Huescape

Our Commitment to Quality



We stand behind every pergola we manufacture with confidence, offering you peace of mind with our comprehensive warranty. Should any issues arise, rest assured that we are here to support you with prompt service and reliable solutions. Our guarantee ensures that your investment is protected, so you can enjoy your new pergola with total confidence.

Pergola Structure	5 years
Electrical Components	2 years
Zip Blinds	2 years
Louvred Aluminium Panels	10 years
Solid Aluminum Panels	10 years
Glazed Panels	10 years
Sliding Glass Doors	10 years

This warranty applies from the date of original purchase. Any replacement parts provided under this warranty will be covered for the remainder of the original product's warranty period.

To activate your warranty, simply request it from your Morvelle Installation Partner after your pergola has been installed.

We're here to help you create the perfect space.

morvelle.com
sales@morvelle.com

Call us +44 1252 986070
Unit 21A Invincible Road, Farnborough, GU14 7QU



MORVELLE 