

# OUTSIDE HOME

weinor patio roofs and Glasoasen®











**PATIO ROOF** or **GLASOASE®**  
Just the way you like it







## **Terrazza** patio roof Enjoy life al fresco

Enjoy your patio until well into autumn – weinor's Terrazza patio roof will keep you well sheltered from the wind and other elements. And your patio furniture can remain outside without being damaged. The appeal of weinor's patio roof is its elegant construction, attractively shaped design and high durability. With numerous versions available, it is also very suited to many different types of houses and requirements.





Frame colour RAL 9016

## The very best patio roof for any application – and completely bespoke

Every weinor patio roof/veranda is of the highest quality. The stable aluminium construction is powder coated using a state of the art process and there are over 200 frame colours available to chose from. Alongside the use of the very highest quality stainless steel screws there is maximum resistance to corrosion. The result is a roof that can be enjoyed for many years trouble free. The special gutter construction allows unobstructed views of the outside as widths of up to 7 metres can be achieved without the need for additional posts in the middle.

# Terrazza – Highlights and versions



## Elegant design – as if from one casting

The weinor Terrazza patio roof captivates through its harmonious design. The elegant yet rigid construction is thought out down to the finest detail:

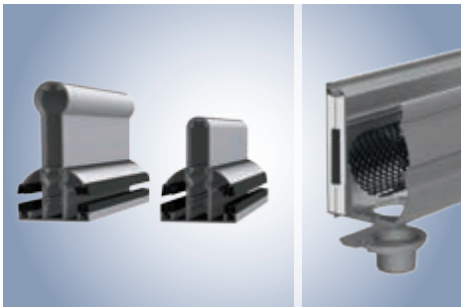
- almost all fixings are concealed for a clean appearance
- corrosion-resistant with powder coated aluminium profiles and stainless steel screws



## Rigid roof covering – resilient and shatter-proof

The weinor Terrazza is designed for use with high quality for high-quality laminated safety glass (LSG):

- glazing can be 10 or 12 mm LSG
- if required, the roof can carry a snow load from 75 N/m<sup>2</sup> up to 550 N/m<sup>2</sup>



## Rigid aluminium construction

The Terrazza stands out for its exceptional stability and durability. The high quality construction is based on static calculations carried out by a certified engineering company.

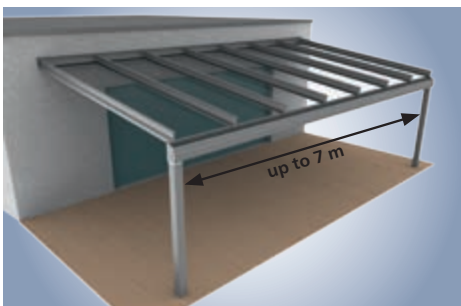
- sturdy roof supports in a variety of configurations
- extra-thick walls in a slim structure
- steel inserts optionally available, also as guttering reinforcements if required
- roof depths up to 6 m



## Invisibly integrated drainage

Rainwater is efficiently drained away by the discretely integrated gutters and drainage outlets inside the post. The drainage outlet can also be positioned at the end of the gutter profile. The optional foliage screen prevents the ingress of leaves

and the like into the rain gutter. There is a choice of two post styles – 115 post (square) and 90 post (round). So the best match can be made to either the existing surroundings or simply a preferred style.



## 220 guttering – large spans without middle posts

Anyone spending time under a patio roof wants to enjoy an unobstructed view. With the 220 guttering combined with

the 115 post, larger spans are also feasible without middle posts, so nothing obstructs the view.







# Terrazza – Roof types and accessories

## Two roof models – equipped exactly the way you need them

To ensure that the roof is a perfect match for the facade it is fitting to, there are several different options and roof types to choose from (see p. 11).



### Patio roof without overhang, with integrated guttering

The basic model comes in a classic lean to design: if you don't need an additional roof overhang, you will find the Terrazza Originale a good solution.



### Patio roof with roof overhang and integrated guttering

Or opt for a Terrazza Plus with roof overhang and integrated downspout – to make sure the rain drains off as it should.

## Attractive post forms – square or round

The posts of the Terrazza Originale are available in square or round design. So there is the right patio roof for every building type, no matter if classic or modern. You can choose between 200 RAL frame colours to match any current trend or existing colour scheme.



Patio roof with post 115 (square)



Patio roof with post 90 (round)





Frame colour WT 029/71289

## Contact your weinor retailer/partner for advice!

weinor patio roofs and Glasoasen® blend in to the shape and appearance of any building facade – even on protruding walls and corner solutions. Your weinor retailers and partners will be happy to explain to you which style of roof is suitable for your needs. Most roof models and types can be very easily combined with weinor glazed elements.

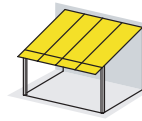


# Terrazza – Styles of roof

## Roof models



Terrazza Originale model without roof overhang and with integrated guttering



Terrazza Plus model with roof overhang and integrated guttering

## Roof types for Terrazza patio roof and Glasoase®



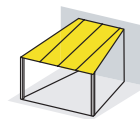
Pent roof – Type A



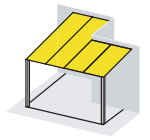
Sloping pent roof – Type B



Trapezium-shaped roof sloping to eaves – Type C



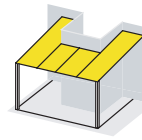
Trapezium-shaped roof sloping to ridge – Type C



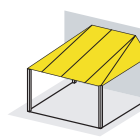
Pent roof with wall offset



Pent roof with roof guttering offset



Pent roof with balcony cutout



Hipped pent roof



Pent roof, hipped and sloping forwards

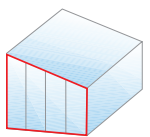


Gable roof – Type L



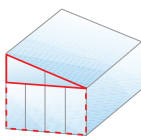
Circumferential pent roof – Type N

## Matching side glazing – tailored to your needs and wishes



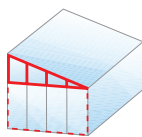
### Maximum transparency: SUPER LITE side element w50-c

Adding fixed glazing below the Terrazza side roof support opens up the possibility to include fully-transparent front panels – with not a single vertical or horizontal strut in sight.



### Complements the full glass sliding door: LITE side element

Lightweight fixed glazing at the top of the trapezium, with a weinor full glass sliding wall below – if you go this way, you'll be choosing a very popular combination!



### As stable as they come: CLASSIC side element

Or go for sturdy fixed glazing at the top of the trapezium, with a full glass sliding door below – or even framed fixed glazing to hold off strong side winds if you prefer.







## **weinor Glasoase®** Light-flooded elegance

Bring your garden into your house – with the elegant weinor Glasoase® that offers you smooth transitions to the outside. This glass oasis is a combination of a Terrazza patio roof comprising all-glass elements that can be closed to form an uninsulated conservatory. The many flexible and fixed-glazed side elements allow for any number of possible combinations. To see our roof shapes, please go to p. 11.



red dot design award  
winner 2009  
weinor Glasoase®









Frame colour WT 029/80077

## w17 easy

# The effortless full glass sliding door

Whether you want it protected and cozy or fresh and airy: With the frameless glass sliding door w17 easy you will always experience pure living pleasure – on your patio. It could not be simpler – thanks to premium fitting technology, the glass sliding door from weinor can be easily operated and locked if required.



reddot award 2017  
winner





# Full glass sliding door w17 easy

## Highlights, features and benefits



### Soft-Closing-System

The w17 easy full glass sliding door is supplied as standard with the new Soft-Closing-System. It allows for the extremely quiet and easy movement of the glass leaves. The system also comes with high-quality stainless steel rollers and guide rails. In addition,

all the leaf actuators, leaf stop bars are fitted with softer cushioning elements at the end positions and on the wall gap sealing profiles. In addition there is the easy close option.



### Soft closure aid option

A soft closure aid option can also be added to the Soft-Closing-System. With this the leaf is

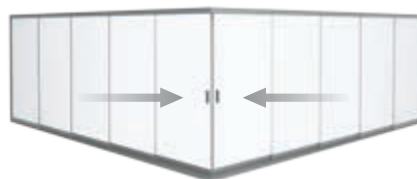
supported when closing similar to a modern kitchen drawer. This enhances the closing process.



Lockplate version – opens on two sides, closes in the centre



Single system – opens on one or two sides, closes on the left and/or right



Corner unit – frameless full glass corner, e.g. for balconies and loggias

### Technical data

#### w17 easy full glass sliding door

	Single system	Lockplate version
Max. width of system	6.6 m	10 m
Max. height of system*	2.8 m	2.8 m
Number of leaves	2 to 5	4 to 10
Guide rail type	2-track to 5-track	2-track to 5-track
Opening type	Parallel-sliding	Parallel-sliding
Type of glass (single-pane safety glass)	6, 8 or 10 mm	6, 8 or 10 mm
Height compensation in the upper rail	Standard: 0 mm/-25 mm	Standard: 0 mm/-25 mm
Wall gap sealing profile	Option	Option
Brushes and gap seals	Option	Option
Soft-Closing-System	Standard	Standard
Easy close	Option	–
Corner unit	90°	90°

\* increased requirements with restrictions possible as of a 2.4 m system height



### Flatter floor rails – elegant and reduced stumbling hazards

Besides the higher standard floor rails with weinor CleanCase® you can also choose the flat version. This version does not have a CleanCase®. The benefit for you: it is so low that it

almost presents no obstacle in transitions – simply accessible! Elegant floor connection profiles that go well with any flooring ensure a nice transition between the floor rail and the patio floor.



### Clever CleanCase® – easy cleaning of running rails

The new standard floor rail has a practical CleanCase® – for the easy removal of dirt using a hand brush or cloth.

- reliable drainage outside



### Comfortable foot-operated catch

weinor developed an intelligent fixing mechanism so that the glass leaves remain reliably in the position you want when fully or partly open.

- comfortable to operate without having to bend down
- locking and releasing of w17 easy by applying slight pressure with the foot



### High-quality handle and lock versions

The full glass sliding doors can be operated conveniently using the high-quality handle versions.

- standard handles: in stainless steel and the system colour
- cup pull handles in V4A stainless steel

- lockcase and hung bolt: in system colour (A4 stainless steel rust-free lockcase inside, highly corrosion-resistant nickel silver key and profile cylinder), can be locked from the inside, can be locked from both sides as an option



### Retrofittable – for virtually every patio roof or veranda

Being a floor-mounted structure, weinor's full glass sliding door wall fits under virtually every patio roof as well as many other roof structures.

- weinor's patio roof can be extended to create a Glasoase®

- no additional costs for structural safety adjustments
- matching profiles from weinor for easy retrofitting
- easy to clean and easily accessible from the outside







Frame colour WT 029/80081 | Pattern StarScreen 7-103

## **WGM Top, Sottezza II, VertiTex II** Three perfect sun shades

With the right form of sun protection for your patio roof, Glasoase® or conservatory, the fabric will shelter you from the heat, glare and prying eyes – and also make you feel even more at home. For well-ventilated patio roofs and Glasoasen®, often the only anti-glare protection that you need is an undermounted conservatory awning. A conservatory can quickly become very warm when the sun shines in. This is where a roof-mounted conservatory awning can help provide a pleasant indoor environment. Vertical protection from the sun and prying eyes comes in the shape of our VertiTex II vertical awning.





Frame colour W1 029/60740 | Pattern 3-745



## Heat and glare protection that stand the test of time

The over roof shading system WGM Top ensures the space underneath your conservatory or glass room does not heat up too much. It stops the sun hitting the glass roof so heat build up is not an issue. The all-round enclosed and robust awning cassette keeps the fabric and other component parts well protected from the elements. You can enjoy superb weather protection for many years.



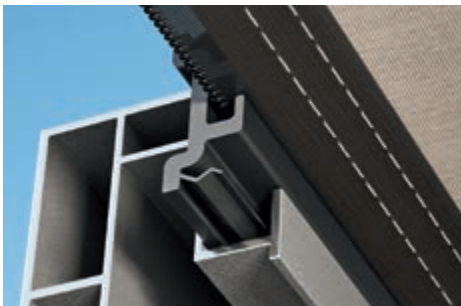
# WGM Top – Highlights and benefits



## Creates an ideal atmosphere under any conservatory or roof structure

The WGM Top can be retrofitted to a whole range of different untrussed roofs. It protects against overheating, thus contributing to a pleasant atmosphere.

- suitable for larger cross sections and dimensions up to 36 m<sup>2</sup>
- wind-resistant up to wind force 6 on the Beaufort scale
- elegant design without any screws, caps or fixings



Functioning principle of OptiStretch

## Clever Stretch and OptiStretch versions

**WGM Top Stretch:** the consistent tension and fabric position creates a cosy atmosphere.

- **Stretch:** held captive on 2 sides, easy to install, cost effective solution

**WGM Top OptiStretch:** superb tension with reduced sagging and no light gaps. Improved performance during operation.

- **OptiStretch:** held captive on all 4 sides, no light gaps



## Supporting brackets for every requirement

The conservatory awning's support brackets top impress with their subtle and almost screwless look. The awning height can be individually adjusted thanks to the different

versions (fixed, adjustable, standard and special version). Even several WGM 2030 support brackets from the previous model are compatible with the WGM Top.



## Quiet and consistent operation

The WGM Top tension system ensures optimum fabric performance and positioning. It includes, amongst other things, a new flat rope and the tried and tested weinor carriage system.

The flat rope is extremely quiet and durable, the weinor carriage system features quiet retraction and extension that is gentle on materials.



## BiSens sun, wind and rain sensors

BiSens radio sensors provide maximum convenience. They open the awning automatically when the sun comes out and retract it in the rain and wind.

Available in the following versions:

- sun/wind/rain sensor
- sun/wind sensor
- sun sensor

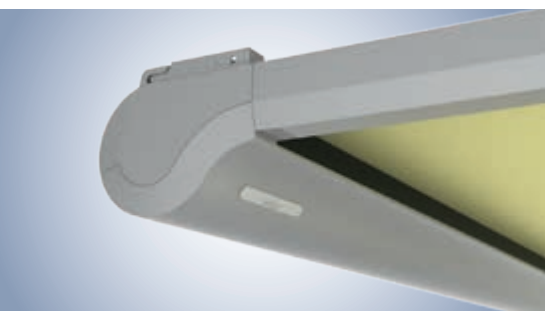
### WGM Top Stretch/OptiStretch

max. width	max. projection
650 cm	500 cm
600 cm	600 cm





Frame colour RAL 7015 | Pattern 3-717



## Under mounted awnings with a homely feel

The under mounted Sottezza II conservatory awning is an attractive anti-glare screen that is always a good choice below a Glasoase® or patio roof because it provides for ample air circulation. The customisable sizes also make it a good fit for any other rectangular patio roof.



Innovationspreis 2016

# Sottezza II/LED – Highlights and benefits



## Under glass sun protection for cosy living

The lean form and beautiful fabric of the Sottezza II guarantees a cosy feeling under your patio roof. A huge range of fabric patterns and colours makes the designing a pleasure.

- additional range of climate-control fabrics Soltis® and Perluca

- optically matching for any patio roof
- suitable for retrofitting almost everywhere
- multi-section units also shade large areas

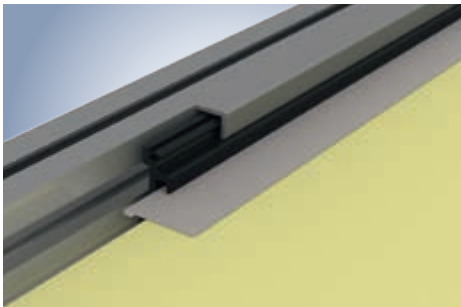


## 2 versions – taut fabric at all times

Sottezza II is available in 2 designs: Sottezza II OptiStretch enclosed all-round with fabric and the cheaper Sottezza II Stretch with open sides.

**Sottezza II OptiStretch:** completely enclosed on all sides, no light apertures on the side or overhanging edges of fabric

**Sottezza II Stretch:** even fabric positioning, small fabric gap on the sides



## Sottezza II OptiStretch – the best all-around fabric tension

Sottezza II OptiStretch is held captive on all four sides. This reduces the risk of fabric sag enormously. The problem of sideways hanging edges is also solved.

- the fabric is positioned securely in the side channel – just like a zip
- no light ingress at the sides



## Long evenings with integrated LED lighting

Enjoy long evenings on your patio – the Sottezza II LED provides atmospheric lighting. The cassette with integrated LED lighting blends discreetly into the architecture of the patio roof.

- suitable warm white light
- operating life of 30,000 hours
- highly energy-efficient
- with weinor radio control, continuous dimming



## Proven technology for optimum fabric performance

The tried and tested tension system also ensures even fabric positioning with the Sottezza II.

- tear-resistant and high-tensile rope

- extremely quiet and easy running
- tried-and-tested tension system over many years

Sottezza II	max. width	max. projection
OptiStretch	600 cm	500 cm
Stretch	600 cm	400 cm





Frame colour WT 029/80081 | Pattern 3-716

## Maximum fabric widths in the smallest cassette

With an exterior vertical shade from our VertiTex II line, you have an anti-glare screen, wind protection and privacy screen all rolled into one. The patented weinor OptiFlow-System® allows us to use a very small and slim cassette on the VertiTex II – yet it is still big enough to house large awning fabrics. Regardless of whether it's for the pergola awning, patio roof, Glasoase® or conservatory, the VertiTex II is always the perfect solution.



# VertiTex II – Highlights and benefits



## Modern design – in two shapes

The VertiTex II is available in different cassette sizes as well as in a square and round version. Making the vertical awning a true asset for the patio roof:

- desired RAL colour in facade quality
- wide range of fabrics from the screens by weinor® collection – including many seamless fabrics without irritating horizontal seams



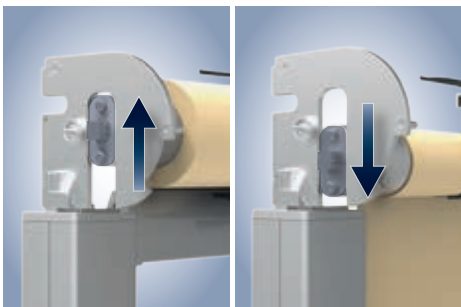
Height 7.5 cm\*

## Ultra-small cassette – even for large system sizes

Exclusively from weinor: thanks to the weinor Opti-Flow-System® the VertiTex II has the smallest cassette, even with large widths up to 6 metres.

- cassette sizes: 75 mm, 92 mm and 112 mm
- elegant alternative to exterior blinds, roller shutters etc. (no obstructed views)
- ideal for installing on frames
- with zip, guide rail or rope

\* even up to 6 meters width



Wound up roller tube (left)/unrolled (right)

The small roller tube for the VertiTex II has a floating bearing. This yields when the fabric is wound up and is therefore safely supported across the entire width of the awning.

As a result, the tube cannot bow under the load and the **fabric position is always optimised**. Very large fabric surface areas up to 15 m<sup>2</sup> can therefore be produced without the cassette size having to be modified.



Indented rope

## Fits almost any situation and application

The VertiTex II rope guide version can have the guide ropes indented if required. This is ideal if there is no fixing at either end, for example indented posts.



VertiTex WeiTop

The shape of the VertiTex WeiTop guttering on a Terrazza patio roof and a Glasoase®.

VertiTex II	max. width	max. height of system*
Zip	600 cm	300 cm
Rail	600 cm	400 cm
Rope	600 cm	400 cm

\* Max. shadeable area: Zip 15 m<sup>2</sup>, rail and rope 14,4 m<sup>2</sup>





BiConnect  
Simply intuitive.



Frame colour WT 029/70786 | Pattern 3-716



Alternatively, you can operate every element of your awning on your patio or terrace using RTS or io-homecontrol® from **somfy**.

## Great comfort thanks to smart solutions

Would you like to be able to control your patio lighting, heating system or awning with just one handset? And for the awning to retract all on its own if it's windy and rainy even if you're not at home? Then BiConnect from weinor is just the right solution for you. An easy to operate hand transmitter with or without display even sends the interference-free radio signal through metal facades and thick insulating layers. And it's even possible to control them using an iPhone or iPad with the BiEasy app.

## Accessories and control – Comfort and security



### Tempura heating system – 2 variations for every living style

Depending on individual taste there are 2 models to choose from: the classic tried and tested Tempura with traditional rounded design or the new Tempura Quadra with modern attractive clean lines.

The compact heating systems blend discreetly into every style of architecture and suits any facade. The instant heat is a superb feature and offers the ultimate in comfort combined with state of the art technology.



### LED/Design light bar/3Spot

Our light bar extends the amount of time you can use your patio roof until well into the evening. The light bars can be wall-mounted or fitted to a roof support depending on your preference.

- warm, atmospheric light thanks to special glass lenses
- highly energy-efficient
- operating life of 30,000 hours
- radio-controlled dimmer using BiConnect
- light bar housing in same colour as patio roof



### New: LED RGB Strip

With 60 coloured LEDs per meter and a finely tuned diffuser, the LED RGB Strip bar produces an evenly distributed and pleasant light.

- selection of 48 colours and 3 whites
- timeless, elegant design



### BiSens sun, wind and rain sensors

Sensor technology automatically opens your awning when the sun comes out and can optionally retract it in the wind and rain:

- solar sensor
- sun and wind sensor (solar-powered version also available)
- sun, wind and rain sensor



### Roof vents for a breath of fresh air

The WeiTop DL permanent roof vent provides a healthy climate and reliable ventilation.

- ingenious design using overlapping roof covers

- spent air is constantly LED outside
- optional insect screen
- optional winter screen for better thermal protection



# 47 standard RAL colours



# Over 200 modern FRAME COLOURS

*Colour manufacturers make every effort to guarantee colour stability. Despite this, as a result of the ban on the use of heavy metals in powder coatings, it therefore cannot be excluded that colours in general, and Fire Red (RAL 3000) in particular, may fade with time. Colours may differ significantly due to the printing process.*

Maximum colour safety: weinor has over 200 different frame colours for you to choose from. You can choose from diverse colours which harmonise with the architecture.

## Identical colours – for a perfect match

As weinor does all the powder coating in its own workshop, you can also rest assured that different weinor products come with the same top-class colour tonality and identical gloss level.

## Choose from an abundance of high-quality colours:

- 47 standard RAL rack colours, silk gloss
- 9 scratchproof, resistant trend colours with an elegant textured look (standard)
- over 150 special RAL colours

RAL 8003  
Clay brown

RAL 6012  
Black green

RAL 1002  
Sandy yellow

RAL 1015  
Light ivory

RAL 1003  
Signal yellow

## 9 trend colours

WT 029/80081  
Iron glimmer  
effect P7

WT 029/80077  
Approx.  
DB 703 metallic

WT 029/10797  
Approx.  
RAL 9010

WT 029/71289  
Approx.  
RAL 7016

WT 029/90146  
Approx.  
RAL 9006 metallic

WT 029/50704  
Approx.  
RAL 6009 metallic

WT 029/90147  
Approx.  
RAL 9007 metallic

WT 029/70786  
Sparkling iron  
effect

WT 029/60740  
Chestnut 04  
metallic







# Award-winning design

Numerous design awards bear testimony to our commitment to provide good designs:

More information at: [weinor.com/awards](http://weinor.com/awards)



Tempura Quadra heating system, 2018  
w17 easy full glass sliding door, 2017  
Semina Life cassette-awning, 2016  
Livona open awning, (Honourable Mention), 2014  
Cassita II cassette-awning, 2014  
Terrazza Glasoase® cold roof conservatory, 2009



w17 easy full glass sliding door, 2017  
weinor PergoTex II pergola awning, 2016  
Sottezza II conservatory awning, 2015



Cassita II cassette-awning, 2014



w17 easy full glass sliding door, 2017  
Sottezza II conservatory awning, 2017



Kubata cassette-awning, 2019  
Terrazza Pure cubic glass patio roof, 2019  
VertiTex II vertical-awning, 2019 (Special Mention)  
w17 easy full glass sliding door, 2018  
Opal Design II cassette-awning, 2014 (Special Mention)



w17 easy full glass sliding door, 2018  
Livona open awning, 2015  
Opal Design II and Cassita II cassette-awnings, 2014



Plaza Viva pergola awning, 2019



weinor PergoTex II pergola awning, 2016



weinor PergoTex II pergola awning, 2016



Sottezza II conservatory awning, 2016

## Top weinor quality for certain



Premium quality made in Germany



**Embodying innovation** – constant enhancements

**Tried and tested weinor quality** – certified production processes, top standards

**Sustainability and responsibility** – high environmental standards and regular checks



Most definitely an original product

**weinor certificate of authenticity**

Every weinor product is delivered with a certificate of authenticity. Ask your retailer and partner for it!

### Important:

**Fabric qualities:** weinor awning fabrics meet strict quality requirements and are produced using state-of-the-art production technology. Despite this, blemishes like creases, rippling in the seam and hem area, overstretching in the hem area and honey-combing cannot be ruled out. This has no negative impact on the quality and operating life and are not a reason for rejection. For more detailed information: [www.weinor.com/fabric\\_qualities](http://www.weinor.com/fabric_qualities)

**Awnings and conservatory awnings:** must be retracted when it is raining or windy – risk of pooling! Fabrics that are allowed to become wet may show increased signs of creasing and wrinkling. They should therefore be extended again to dry when the weather is better.

**Frame colours:** depending on the frame colour ordered, we deliver all small parts, as well as gear

handles and gear boxes in black (similar to RAL 9005), white (similar to RAL 9016), or in grey (similar to weinor 7319).

### Patio roofs and Glasoasen\*:

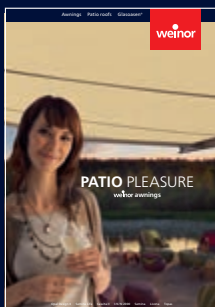
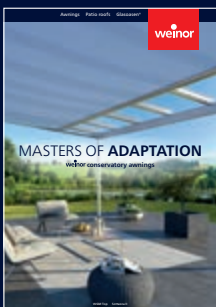
Ask a qualified retailer and partner about the causes of condensation formation and any cracking sounds which may occasionally be heard (and how to avoid them from the planning stage onwards).





Front and back cover: Frame colour WT 029/70786 | Pattern 3-716

We reserve the right to make technical changes as well as changes in range and product portfolio. For technical reasons, the colours may appear slightly different when printed.



Experience the whole weinor.com world

Your specialist weinor partner will be pleased to advise you:

Patent no	
16001718.2	EP 0959195
17000580.5	EP 1310609
16002201.8	EP 1835089
16002204.2	EP 1936062
16002202.6	EP 1936105
17001164.7	EP 2072709
16002717.3	08006834.9
17000149.9	EP 2136214
17000150.7	EP 2202376
17001051.6	EP 2199484
17001050.8	EP 2383402
17000679.5	EP 2631386
17000680.3	EP 3048213
18000571.2	
18000941.7	
Gem G5.004009249-0001	